

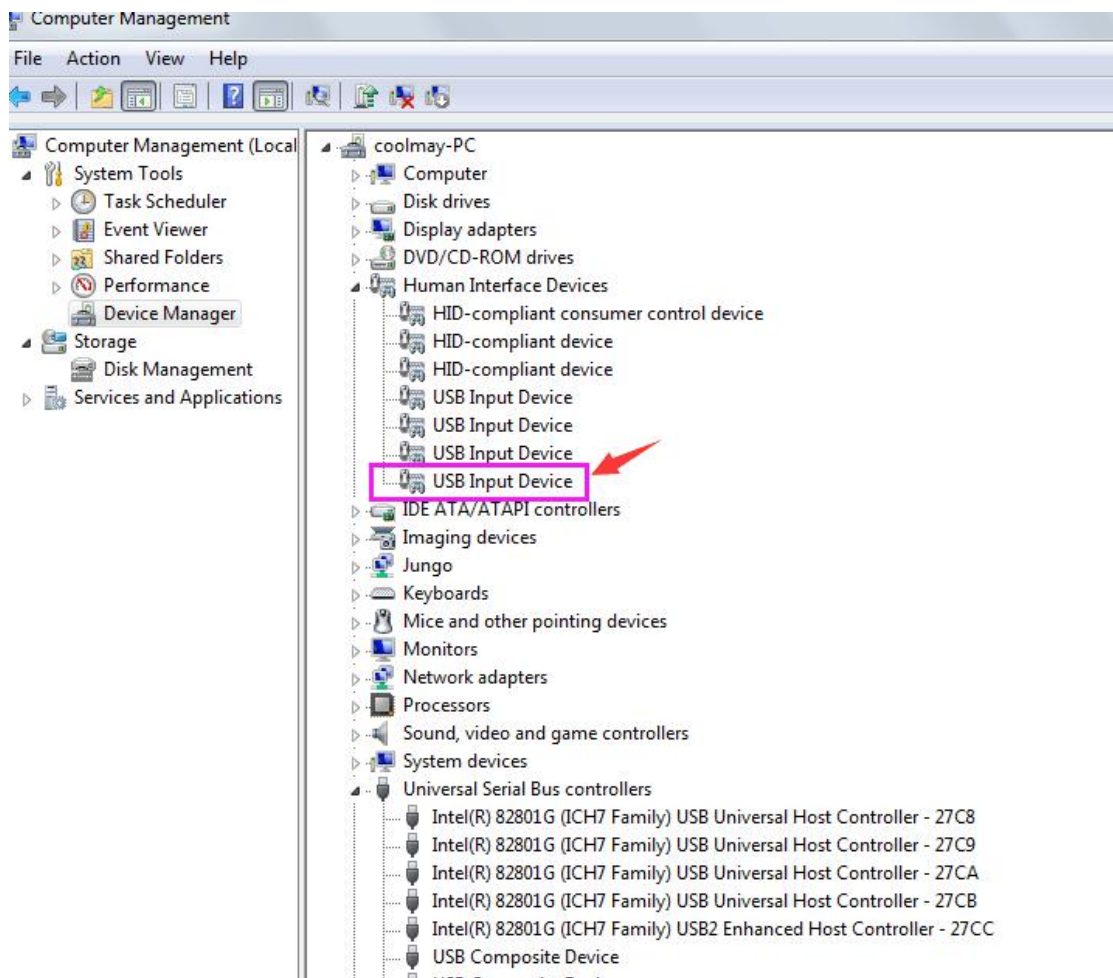
# Instructions of MT90 HMI drive installation

Shenzhen Coolmay Technology Co., Ltd

Version 1901

## Instructions of MT90 HMI drive installation

Note: The driver of MT90 series touch screen is the same as the computer mouse and keyboard driver. When the computer is connected with the HMI downloading cable, it will be automatically recognized as one of the USB input devices in the adult body input device. This driver is the HMI driver (To check if it is the driver you are looking for, you can view [Computer Management--Device Manager--Human Interface Device], and it will be the HMI driver if the driver disappeared while pulling up the cable. It shows as below:



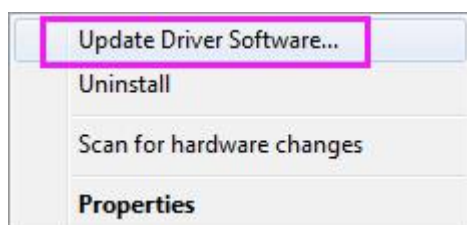
If you cannot download the MT90 series HMI program, there are two cases:

**Case 1: HMI was recognized as another device**

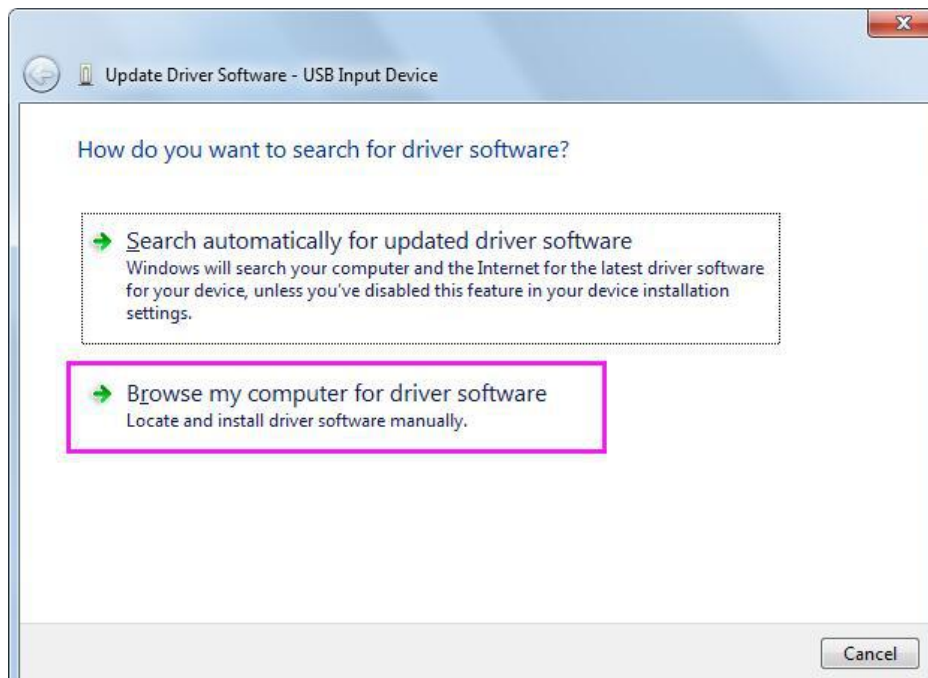
Solutions:

First, plug and pull the HMI downloading cable to confirm that it has been recognized as another device, and then manually update the driver. The update steps are as follows:

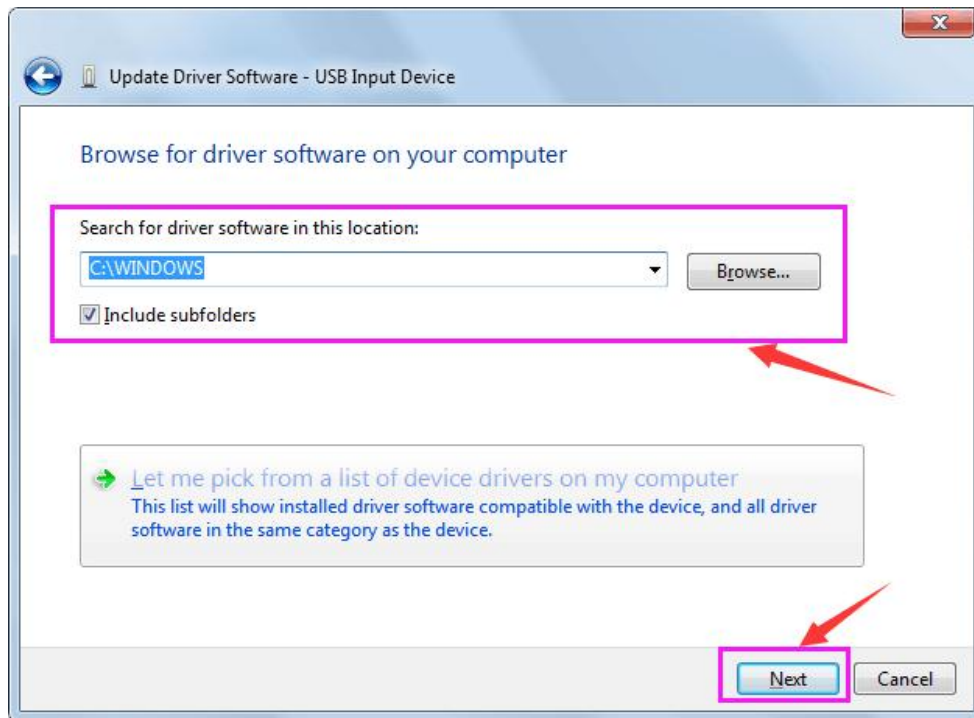
Step 1. It shows as below. Firstly find the device that disappeared while pulling up the cable in [Computer Management - Device Manager - Other Devices]. Right click on the driver and select Update Driver Software.



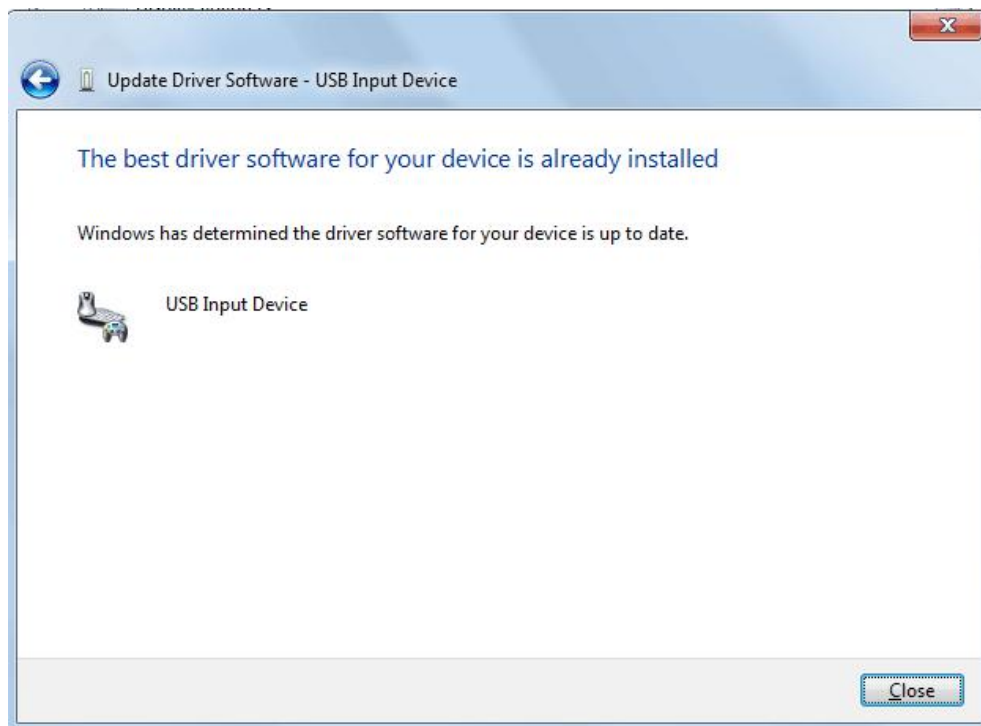
Step 2. Click “Browse my computer for driver software”.



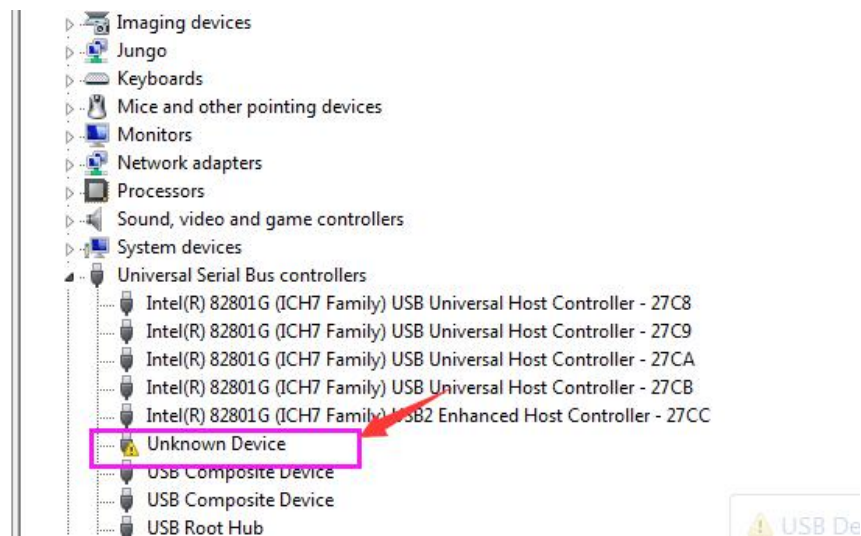
Step 3. Click browse the driver software path, and generally the driver is in the subfolder of the “C:\Windows folder”, check the option that includes subfolders, and then click Next.



Step 4. The successfully installation page is as below.



## Case 2: HMI is recognized as “Unknown Device”



### Solutions:

1. Change the computer and download it using a computer that can be automatically recognize USB input device or other devices.
2. Try to restart the computer and HMI, and change the computer USB interface, or change downloading cable.
3. Re-install the computer.
4. Return to the factory for testing.